

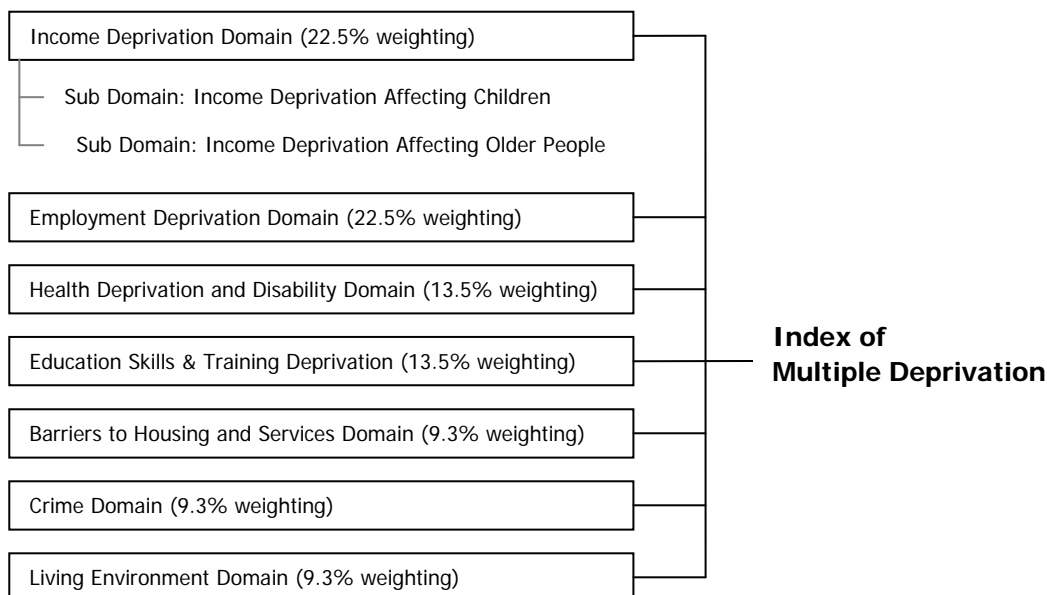
## Introduction

The Department of Communities and Local Government commissioned the Social Disadvantage Research Centre (SDRC) at the Department of Social Policy and Social Work at the University of Oxford to update the Indices of Deprivation 2004 (ID 2004) for England. Following an extensive public consultation, an independent academic peer review and a significant programme of work, the new Indices of Deprivation 2007 were produced in late 2007.

The new Index of Multiple Deprivation 2007 (IMD 2007) is a Lower layer Super Output Area<sup>1</sup> (LSOA) level measure of multiple deprivation, and is made up of seven subject areas, referred to as domains, each of which is made up of several indicators.

Each of the 32,482 LSOAs in England are provided with a score and ranked from 1 (most deprived) – 32,482 (least deprived) to provide an overall measure of multiple deprivation, along with a score and rank for each 'domain'.

Summary measures of the IMD 2007 are also presented at local authority district level and county council level.



The domains and methodology are the same in the ID 2007 as in the ID 2004 and as far as possible most indicators are equivalent to their ID 2004 counterparts. Therefore, most change is likely to reflect real relative change between the two time periods. Notwithstanding this, some change will be occasioned by the substitution of some new indicators in the ID 2007 – especially in the Income Deprivation Domain.

Nationally, the 'most deprived areas' are classed as those within the top 20% within England (LSOAs which have a rank between 1 and 6496).

## Why is the IMD important?

The IMD is the Government's main measure for Neighbourhood Renewal. Overcoming deprivation has been one of the key objectives of neighbourhood renewal since it was established as part of the 'National Strategy Action Plan for Neighbourhood Renewal' in 2001, when the 88 most deprived Local Authority Districts were identified. Penwith and Kerrier were included amongst these and were therefore eligible to receive Neighbourhood Renewal funding to help tackle deprivation.

A children and young people's version of the IMD is planned for publication by the DCLG in late 2007/early 2008.

<sup>1</sup> LSOAs are a statistical geography unit. They have a minimum population 1000; mean 1500. Built from groups of OAs (typically 4 to 6) and constrained by the boundaries of the Standard Table (ST) wards used for 2001 Census outputs.

# Index of Multiple Deprivation Maps

## Index of Multiple Deprivation 2007

Source: DCLG

© Crown copyright. All rights reserved. 100019590. 2006

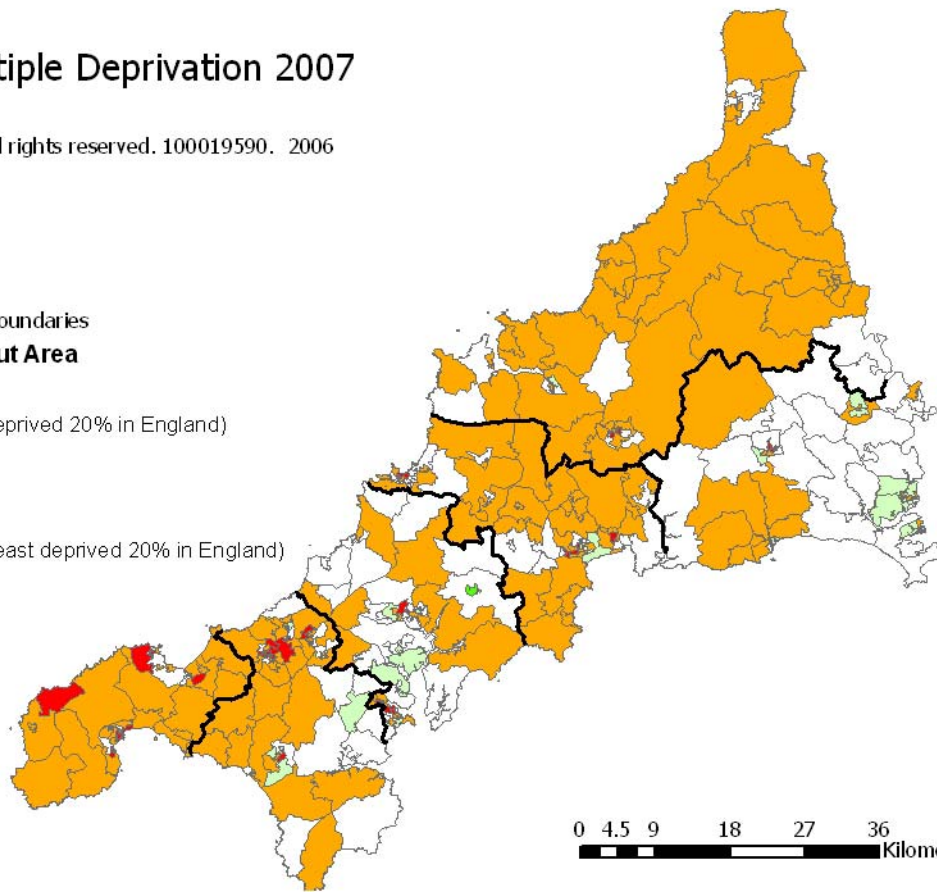
### Legend

— District Council Boundaries

### Lower Super Output Area

#### Rank

- 1 - 6496 (most deprived 20% in England)
- 6497 - 12993
- 12994 - 19489
- 19490 - 25986
- 25987 - 32482 (least deprived 20% in England)



## % Change Index of Multiple Deprivation 2004 - 2007

Source: DCLG

© Crown copyright. All rights reserved. 100019590. 2006

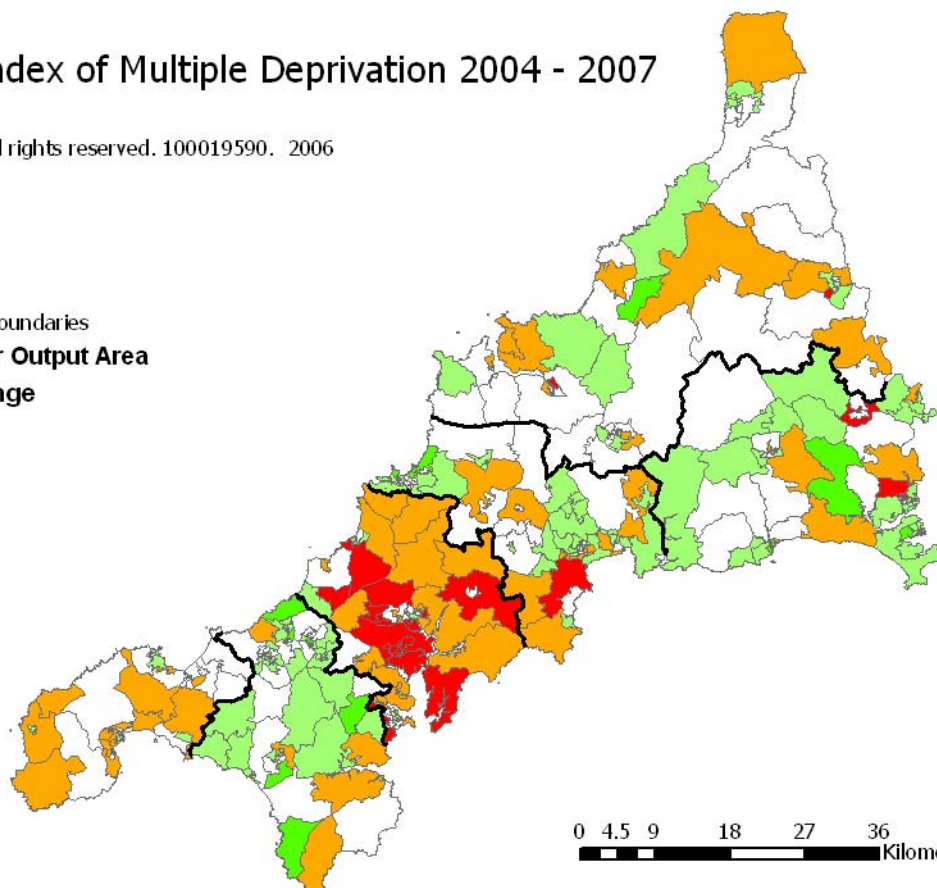
### Legend

— District Council Boundaries

### Lower Layer Super Output Area

#### Percentage Change

- -17% - -9%
- -8% - -5%
- -4% - -1%
- 0% - +4%
- +5% - +23%



## IMD Sub Domain: Income Deprivation Affecting Children

Source: DCLG

© Crown copyright. All rights reserved. 100019590. 2006

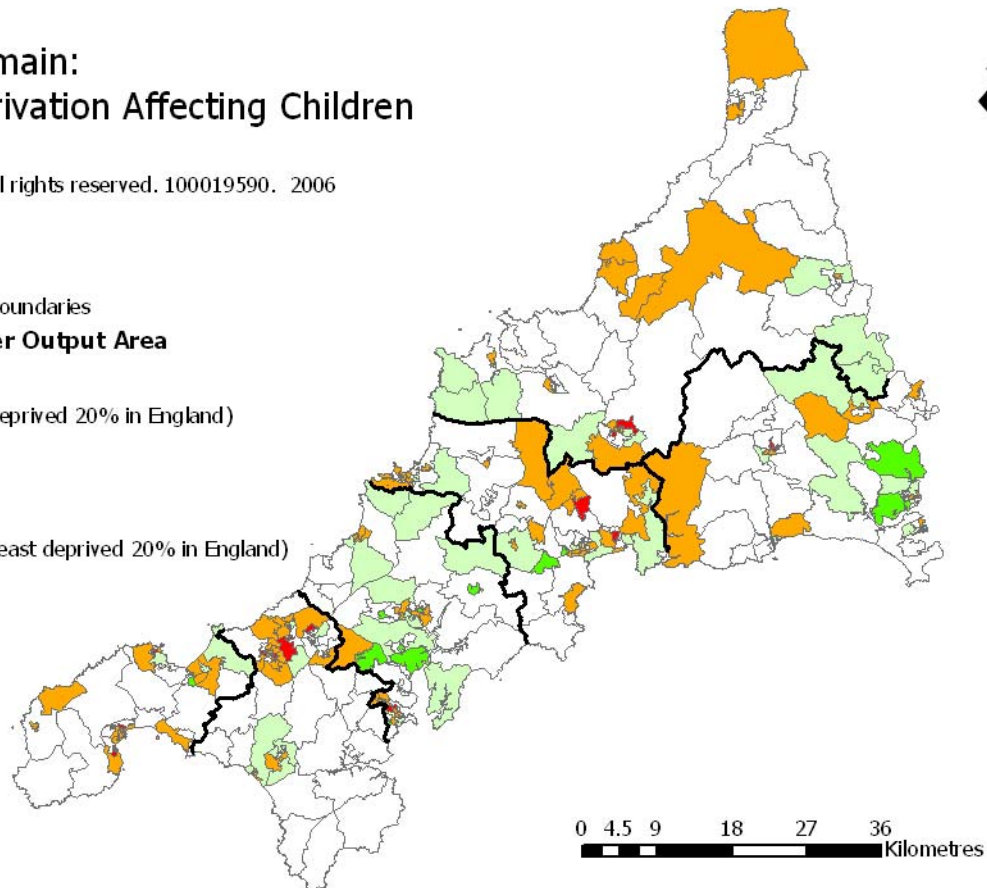
### Legend

— District Council Boundaries

### Lower Layer Super Output Area

#### Rank

- 1 - 6496 (most deprived 20% in England)
- 6497 - 12993
- 12994 - 19489
- 19490 - 25986
- 25987 - 32482 (least deprived 20% in England)



### How has the deprivation level in Cornwall changed since 2004?

Based on the rank of the average score, Cornwall is now ranked 69<sup>th</sup> of the 149 county councils in England (46<sup>th</sup> percentile), compared to 75<sup>th</sup> in 2004 (50<sup>th</sup> percentile). This indicates that there are higher levels of deprivation.

### How has the deprivation level of Local Authority areas changed since 2004?

All Local Authority areas in Cornwall have lower ranks than in the 2004 IMD, indicating higher deprivation levels. Carrick and Penwith have shown the biggest increase in deprivation, and Penwith now ranks within the top 10% nationally.

District Area	IMD 2004		IMD 2007		2004 - 2007
	Rank /354	Percentile	Rank /354	Percentile	Change in rank
Penwith	56	16%	36	10%	-20
Kerrier	87	25%	86	24%	-1
Restormel	93	26%	89	25%	-4
North Cornwall	106	30%	96	27%	-10
Carrick	149	42%	120	34%	-29
Caradon	157	44%	156	44%	-1

## How many LSOAs in Cornwall are in the 20% most deprived within England for 2007?

There are 36 LSOAs in the 20%, compared with 32 in 2004. The areas are shown in the table below and also in the map in Appendix 1.

LSOA Code	ONS LSOA Name	Local LSOA Name	IMD England Rank 2004 /32482	IMD England Rank 2007 /32482	IMD Cornwall Rank 2007 /327
E01018997	Penwith 006E	Penzance Treneere	819	589	1
E01018870	Kerrier 008B	Camborne South Ward North Central	1580	1189	2
E01018910	Kerrier 002C	Redruth North Ward West Central	1406	1223	3
E01018875	Kerrier 007B	Camborne West Ward West Central	2849	1947	4
E01018995	Penwith 007A	Penzance Central Ward East	2256	2242	5
E01018841	Carrick 011D	Falmouth Penwerris Ward North	3650	2892	6
E01019056	Restormel 008A	St Blazey West	3166	3213	7
E01018930	North Cornwall 012D	Bodmin St Mary's Ward South East	4064	3224	8
E01019033	Restormel 012A	St Austell Gover Ward South East	4971	3332	9
E01018898	Kerrier 005E	Illogan Highway South	4274	3337	10
E01018996	Penwith 006D	Penzance Lescudjack and Ponsandane	3519	3339	11
E01018767	Caradon 005A	Liskeard North Ward Central	5382	3390	12
E01019041	Restormel 012B	St Austell Mount Charles Ward North West	2528	3420	13
E01018860	Carrick 011E	Falmouth Trescobeas Ward North	4929	3518	14
E01019004	Penwith 009D	Newlyn East	4431	3709	15
E01018836	Carrick 010C	Penryn South	5780	3929	16
E01018984	Penwith 002E	Hayle South and High Lanes	6354	4167	17
E01018999	Penwith 007C	Penzance Town Centre Central	4821	4243	18
E01018897	Kerrier 005D	Pool West and Tregajorran	4791	4408	19
E01018868	Kerrier 006D	Camborne North Ward South West	4817	4940	20
E01019020	Restormel 004C	Newquay Edgcumbe North Ward West	5861	4973	21
E01018911	Kerrier 002D	Redruth North Ward South West	4396	5007	22
E01019029	Restormel 003B	Newquay Gannel Ward North East	4130	5066	23
E01018991	Penwith 005C	Pendeen and Morvah	7390	5085	24
E01018867	Kerrier 006C	Camborne North Ward South East	6111	5593	25
E01019046	Restormel 012F	St Austell Poltair Ward South East	5062	5612	26
E01018888	Kerrier 011G	Helston South Ward North East	6637	5711	27
E01018977	Penwith 006B	Heamoor Central	7750	5854	28
E01018933	North Cornwall 011B	Bodmin St Petroc Ward Central	5097	5859	29
E01019008	Penwith 001A	St Ives West	6278	5984	30
E01018838	Carrick 011A	Falmouth Penwerris Ward Central	6826	5996	31
E01018857	Carrick 005E	Truro Hendra And Malabar North	6484	6109	32
E01019009	Penwith 001B	St Ives Hellesveor and Halsetown	7594	6163	33
E01018865	Kerrier 006A	Camborne North Ward North	6429	6299	34
E01018878	Kerrier 007E	Camborne West Ward East Central	5769	6374	35
E01019001	Penwith 007D	Penzance Promenade Ward East	6272	6387	36

## What percentage of the population live in the top 20% most deprived

	% total population in 20% most deprived in England	% population aged 0-15 in 20% most deprived in England	Population aged 60+ (females) 65+(males) in England
Caradon	2%	2%	2%
Carrick	9%	9%	8%
Kerrier	17%	17%	16%
North Cornwall	4%	4%	3%
Penwith	29%	26%	24%
Restormel	9%	10%	9%
Cornwall	11%	11%	10%

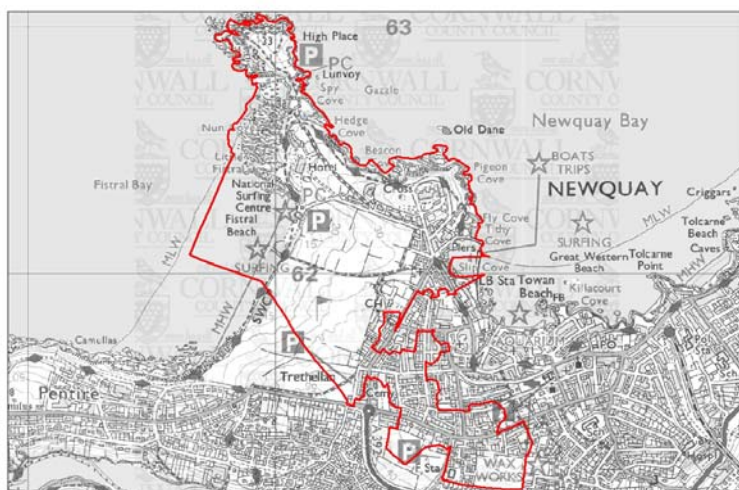
Source: ONS LSOA Estimates 2005

## Have any areas moved out of the 20% most deprived?

Newquay Gannel Ward North West (LSOA: E01019028, Restormel 003A) has moved out of the top 20%.

The improvements have been within the Employment, Crime, Income and Health domains.

	2004 Rank	2007 Rank	Change in rank
IMD	4686	6606	+1920
Employment	3289	6383	+3094
Crime	1318	4219	+2901
Income	6509	8527	+2018
Health	8430	8696	+266
Housing	6122	5913	-209
Environment	4932	3736	-1196
Education	13373	11858	-1515



© Crown copyright. All rights reserved, 100019590, 2006

## Are there any new areas in the 20% most deprived nationally?

There are five areas in the top 20% which didn't appear in the 2004 IMD:

LSOA Code	ONS LSOA Name	Local LSOA Name	District	IMD England Rank 2007 /32482	IMD Cornwall Rank 2007 /327
E01018991	Penwith 005C	Pendeen and Morvah	Penwith	5085	24
E01018888	Kerrier 011G	Helston South Ward North East	Kerrier	5711	27
E01018977	Penwith 006B	Heamoor Central	Penwith	5854	28
E01018838	Carrick 011A	Falmouth Penwerris Ward Central	Carrick	5996	31
E01019009	Penwith 001B	St Ives Hellesveor and Halsetown	Penwith	6163	33

## Which areas have improved the most?

The following shows the top 10 areas which have improved the most.

LSOA Code	ONS LSOA Name	Local LSOA Name	IMD 2004 Rank	IMD 2007 Rank	IMD 2004 Quintile	IMD 2007 Quintile	Change in rank
E01018899	Kerrier 010C	Mabe	14941	22574	3	4	7633
E01018904	Kerrier 013D	Mullion	11991	16355	2	3	4364
E01018886	Kerrier 011E	Helston South Ward South East	20060	23819	4	4	3759
E01018801	Caradon 012C	Torpoint West Ward West	21596	24413	4	4	2817
E01018892	Kerrier 001D	Portreath	12247	14333	2	3	2086
E01018896	Kerrier 005C	Illogan Highway North and Tolgus	12306	14382	2	3	2076
E01018776	Caradon 013D	Looe Central	11328	13361	2	3	2033
E01018939	North Cornwall 004A	Camelford	10258	12247	2	2	1989
E01019048	Restormel 001A	Rialton Ward Newquay West and Tregurrian	12015	13998	2	3	1983
E01019028	Restormel 003A	Newquay Gannel Ward North West	4686	6606	1	2	1920

## Which areas have worsened the most?

LSOA Code	ONS LSOA Name	Local LSOA Name	IMD 2004 Rank	IMD 2007 Rank	IMD 2004 Quintile	IMD 2007 Quintile	Change in rank
E01018946	North Cornwall 005A	Launceston South West	15778	10263	3	2	-5515
E01018808	Carrick 006B	Truro Boscawen Ward South West	19439	14384	3	3	-5055
E01018845	Carrick 008A	Tregony and Probus Rural	21770	17071	4	3	-4699
E01018818	Carrick 007C	Carnon Downs and Playing Place	18888	14721	3	3	-4167
E01018817	Carrick 007B	Devoran, Playing Place and Kea Rural	21031	16889	4	3	-4142
E01018814	Carrick 013D	Falmouth Boslowick Ward North	19288	15192	3	3	-4096
E01018853	Carrick 004C	Truro Tregolls Ward North	18681	14650	3	3	-4031
E01018788	Caradon 008B	Saltash Burraton Ward South West	14886	10863	3	2	-4023
E01018816	Carrick 007A	Feock and Point	23882	20203	4	4	-3679
E01018821	Carrick 007E	Shortlanesend and Kenwyn Rural	19085	15600	3	3	-3485

For more information and maps on the IMD please visit [www.cornwallstatistics.org.uk/imd](http://www.cornwallstatistics.org.uk/imd)

Abi Messenger

Research and Information Officer

Local Intelligence Network Cornwall

T: 01872 322666 E: [amessenger@cornwall.gov.uk](mailto:amessenger@cornwall.gov.uk)